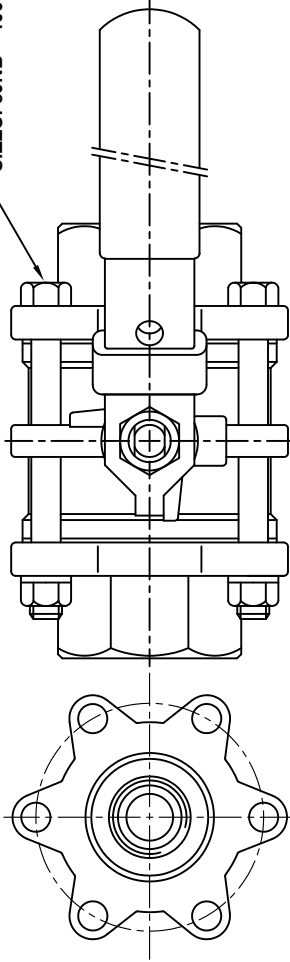
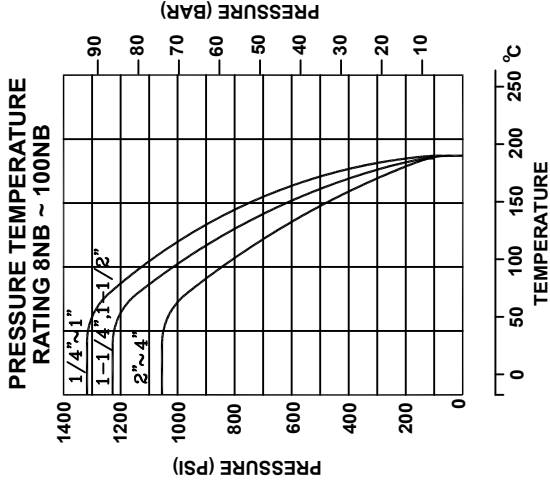
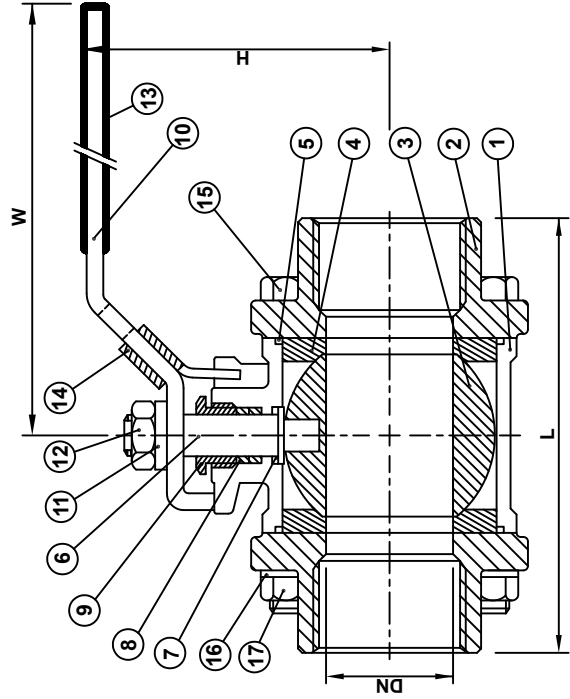


SOCKET WELD END

SIZES: 8NB ~ 65NB (4 BOLTS)
SIZES: 80NB ~ 100NB (6 BOLTS)



SIZES: 80NB & 100NB



NO	PART NAME	MATERIAL
1	BODY	ASTM A351 CF8M
2	CAP	ASTM A351 CF8M
3	BALL	ASTM A351 CF8M
4	SEAT	15% R-PTFE
5	GASKET	15% R-PTFE
6	STEM	AISI 316
7	THRUST WASHER	PTFE
8	STEM PACKING	PTFE
9	GLAND NUT	AISI 304
10	HANDLE	AISI 304
11	SPRING WASHER	AISI 304
12	STEM NUT	AISI 304
13	PLASTIC COVER	PLASTIC
14	LOCK DEVICE	AISI 304
15	BOLT	AISI 304
16	SPRING WASHER	AISI 304
17	HEX NUT	AISI 304

SIZE	DN	H	W	L	S	Cv Factor	Weight kg
8	11.6	51	95	54	14.1	6.6	0.4
10	12.7	51	95	54	17.6	7.9	0.4
15	15	53	95	61.5	21.7	11.2	0.58
20	20	59.5	110	71	27.2	21	0.75
25	25	73	135	83.5	33.9	34	1.08
32	32	79	135	97	42.6	57	1.85
40	38	90.5	165	110.5	48.7	80	2.45
50	50	99	165	129	61.1	148	3.7
65	65	127	215	171.5	76.9	265	7.4
80	80	136	215	200	89.8	415	11
100	100	172	325	252	115.4	780	22

Pipeline Dynamics

V3 3PCE BSP

REV B

DATE SEP 2008

SCALE TO FIT

3-PCE BALL VALVE FB BSP ENDS LOCKABLE LEVER