

ELECTRIC QUARTER TURN ACTUATOR

MODEL: RBP HQ015 - 30

Rechargeable Battery Backup

FEATURES AND BENEFITS

Emergency application when power failure on site

- Rechargeable Battery Back up (RBP), 240V AC (015, 020, 30 sizes only)
- Automatic recharge
- LED battery level indication
- High torque and various control options to meet specific requirements
- High Corrosion resistance due to hard anodizing internally and externally.
- Space heater(10W) standard preventing moisture and condensation build up.
- 4 Limit Switches (2 operation open/close, 2 additional for client use).
- Open/Close over torque switches are standard providing added protection against damage.
- Manual over ride featuring de-clutchable lever and handwheel.
- Fan cooled motor is reversible and features high output power, high efficiency and contains built in thermal overload protection (150°C Open, 97° Close) preventing over heating and damage to the motor coil.
- Open/Close stopper bolts protect gearing against over travel during manual operation.
- Removable drive bushing can be machined to suit any valve.



OPTIONS

- Water Tight IP68, 10M 72HRS (WTA)
- Explosion Proof, Ex d IIB T4 (EXA)(ATEX)
- Potentiometer Unit, 1000 Ω (PIU)
- Proportional Control Unit (PCU)
 - Input / Output 4-20mA
 - Input / Output 0-10V DC
- Additional Torque Switches (ATS)
- Current Position Transmitter (CPT)

APPLICATIONS

Challenger Valves and Actuators are the **“Right Choice for Valves and Actuation”** when quality matters.

HQ 015-30 Electric actuators are specially designed for quarter turn valve operation such as Ball, Butterfly, Plug valves/Dampers and similar usages.

Servicing industries such as : Water & Waste Water, Mining, Desalination, Pumping, Industrial Processing, Irrigation, Materials Handling and Chemical Services.

TECHNICAL SPECIFICATION

Construction : Quarter turn electric actuator

Voltage Option:

- 240v AC

Maximum Output Torque: 150-300Nm

Operating Time: 21-31 seconds

Mounting: ISO 5211

Enclosure:IP67

Rated Current:

- 240v AC 0.73A-0.84A

Duty Cycle: 70% (S4)

Temperature Range: -20°C to 70°C

Cable Entry: PF 3/4" Tap

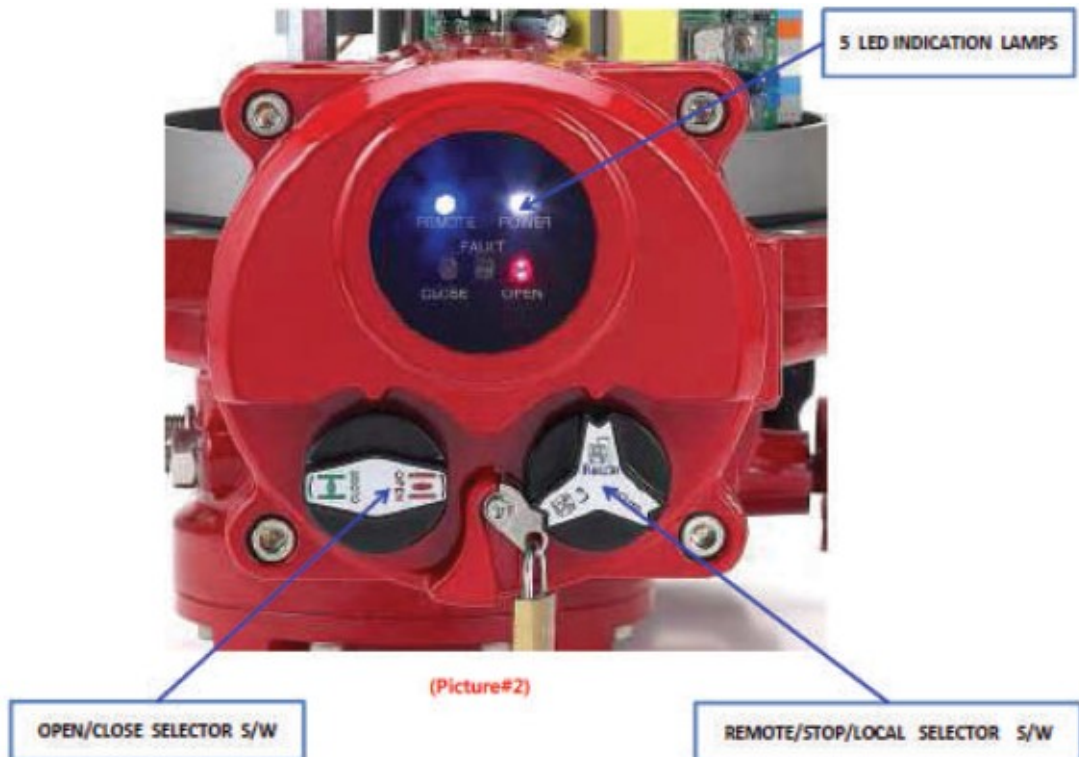
ELECTRIC QUARTER TURN ACTUATOR

MODEL: RBP HQ015 - 30

Rechargeable Battery Backup

TECHNICAL DATA:

Size	MAX TORQUE Output Nm	Operating Time (sec) 60/50Hz 90°	Maximum Bore mm	Motor Class F Model & Frame M * F	Rated Current (A) 60Hz/50Hz 1 Phase 240V	Duty cycle IEC 34-1 S4(%)	Number of Turns on Hand wheel N	Weight Kg
HQ015	150 Nm	21/25	22Ø	40 * 80	0.84/0.73	70	11	16.6
HQ020	200 Nm	21/25	22Ø	40 * 80	0.84/0.73	70	13.5	16.6
HQ030	300 Nm	26/31	35Ø	40 * 90	0.81/0.68	70	13.5	22



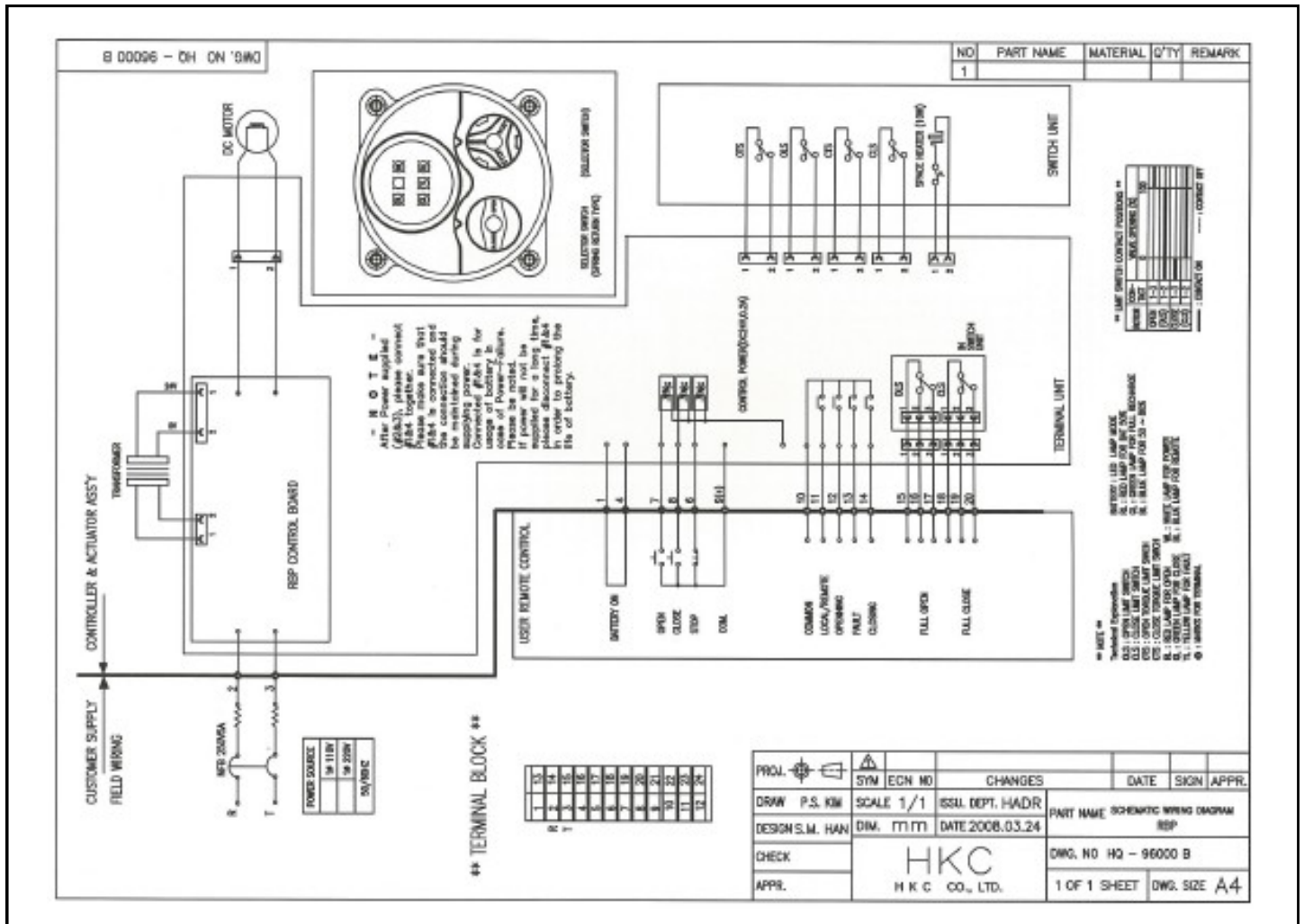
LED lamp signal	
White	○ : Power
GBR	● : Battery level
Blue	● : Remote
Yellow	● : Fault
Red	● : Open/ Opening
Green	● : Close/ Closing

ELECTRIC QUARTER TURN ACTUATOR

MODEL: RBP HQ015 - 30

Rechargeable Battery Backup

WIRING DIAGRAM: RBP HQ-015-030 240v AC



Typical Actuator sizing for valves - please check with us for confirmation

MODEL	WAFER B/FLY (WSSE)	LUGGED B/FLY (LSSE)	DOUBLE FLANGED (USSE)	SS 3 PCE B/V (SS3301)	SS 3 WAY B/V (SS490)	SS FLANGED B/V (SS901D)	SS 3 WAY FLANGED B/V (SS401)	BRASS B/V (B501)
HQ015	125	125	150	65	50	40	-	100
	150	150		80		50		
				100		65		
						80		
HQ020	200	200	-	-	-	50	-	
HQ030	250	250	200	-	-	150	65	-
	300	300					80	

*Sizing based on wet service